

BUILDING 16 | 1800 MOUNTAIN AVENUE, NORCO, CA

**+64,800**  
Square Feet

**LIVE**



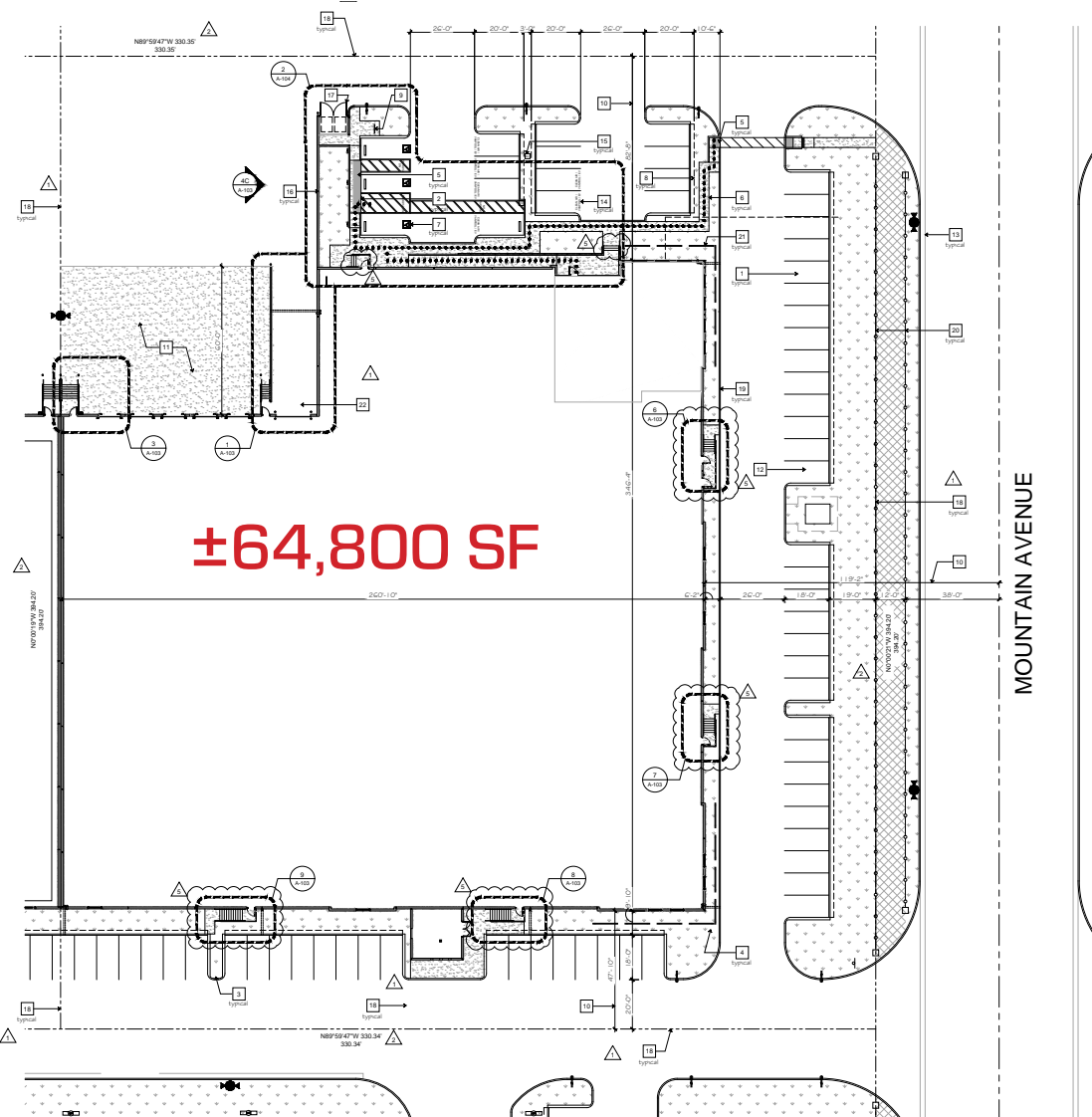
**Palomino Ranch Business Park is a master-planned, last-mile development project in the Inland Empire West that will total ±1.96M SF across ±112-acres at completion**

**BUILDING 16 | 1800 MOUNTAIN AVENUE, NORCO, CA**

**BUILDING HIGHLIGHTS**

- ±64,800 SF
- ±3,113 SF 1ST FLOOR OFFICE
- ±3,081 SF 2ND FLOOR OFFICE
- 32' CLEAR HEIGHT
- ESFR FIRE SPRINKLER
- ±165' TRUCK COURT DEPTH
- 5 DOCK DOORS
- 1 GROUND LEVEL DOOR
- 68 PARKING SPACES
- 1,600 AMP PANEL - EXPANDABLE TO 4,000 AMPS (VERIFY)

**SITE PLAN**

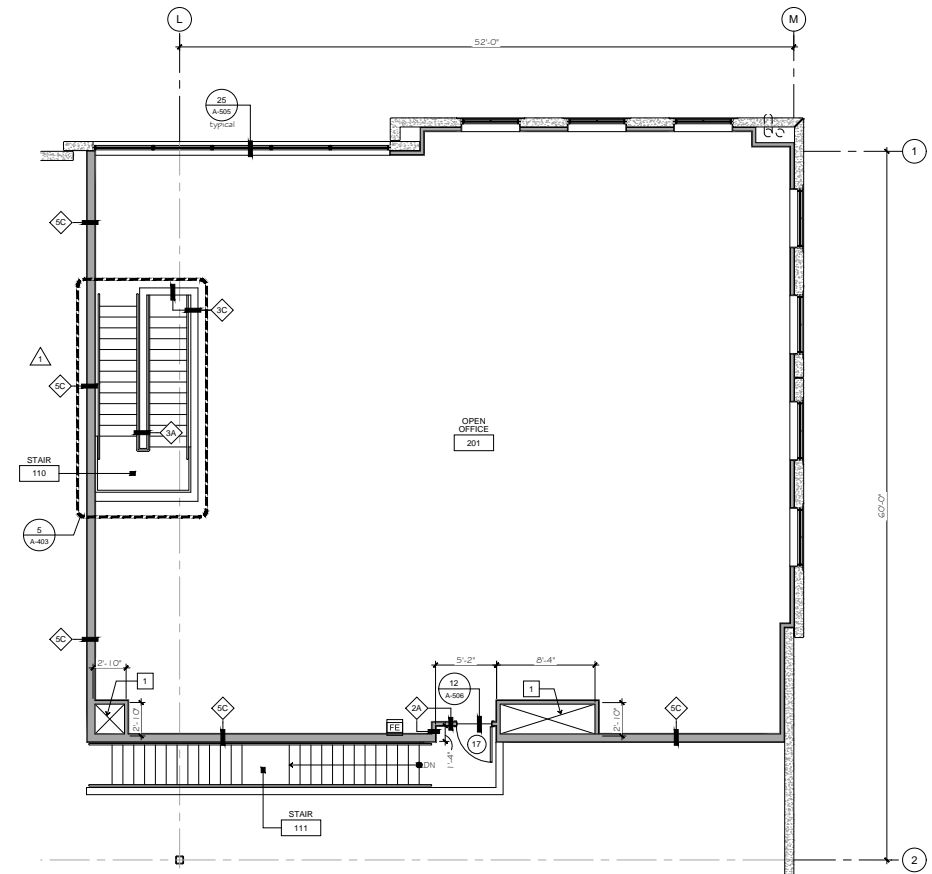
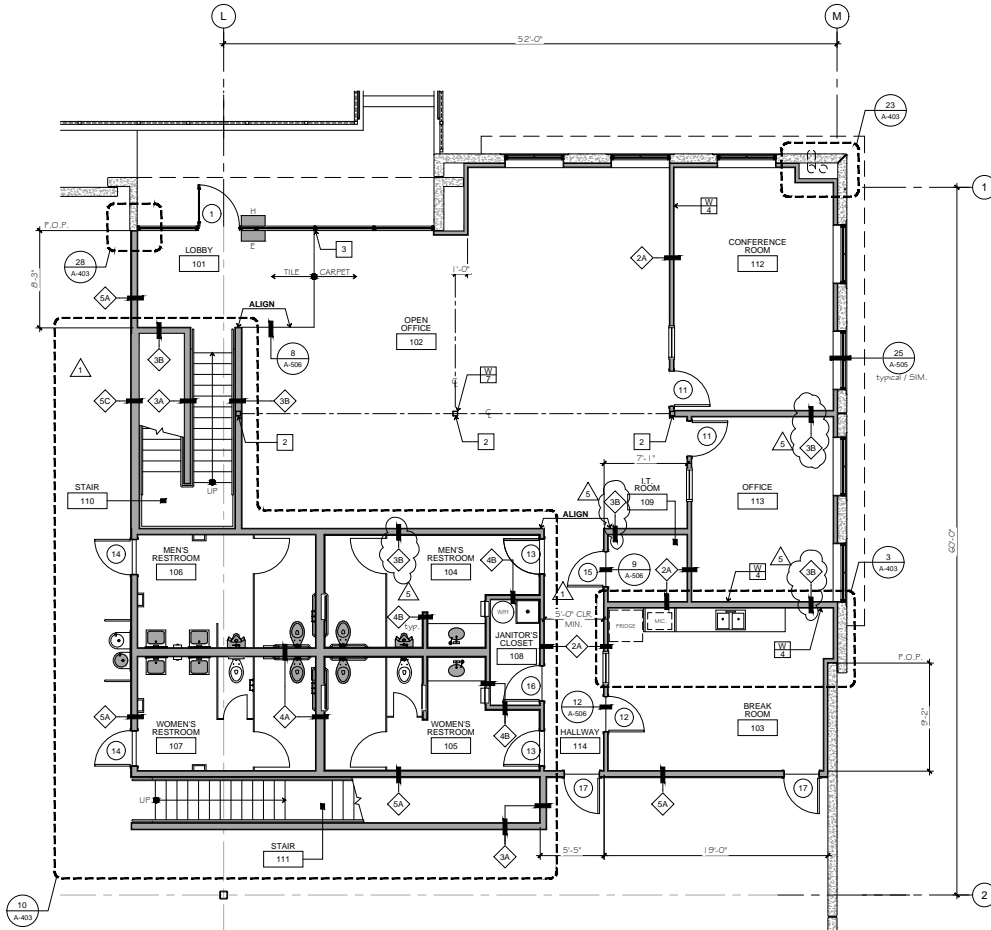




**BUILDING 16 | 1800 MOUNTAIN AVENUE, NORCO, CA**

**1ST FLOOR OFFICE**

**2ND FLOOR OFFICE**







**Jeff Ruscigno, SIOR**  
 Senior Vice President  
 951.276.3600  
 Lic#01030286  
[jruscigno@leeriverside.com](mailto:jruscigno@leeriverside.com)

**Paul Earnhart, SIOR**  
 Senior Vice President  
 909.989.7771  
 Lic#01426559  
[pearnhart@lee-assoc.com](mailto:pearnhart@lee-assoc.com)

**Ryan Earnhart**  
 Senior Vice President/Principal  
 909.373.2724  
 Lic#01426559  
[rearnhart@lee-assoc.com](mailto:rearnhart@lee-assoc.com)

**Brian Pharris**  
 Senior Vice President/Principal  
 909.373.2927  
 Lic#01329363  
[bpharris@lee-assoc.com](mailto:bpharris@lee-assoc.com)

**Austin Hill**  
 Senior Vice President/Principal  
 909.373.2732  
 Lic#01921364  
[ahill@lee-assoc.com](mailto:ahill@lee-assoc.com)

**Jeff Smith, SIOR**  
 Senior Vice President/Principal  
 909.373.2909  
 Lic#01030286  
[jsmith@lee-assoc.com](mailto:jsmith@lee-assoc.com)