



**PALOMINO RANCH**  
BUSINESS PARK  
HORSETOWN USA - NORCO, CA



**CAPROCK**  
PARTNERS



**BUILDING 14** | 1700 MOUNTAIN AVENUE, NORCO, CA

**Available  
Now**

**±145,424**

Square Feet

**LIVE**

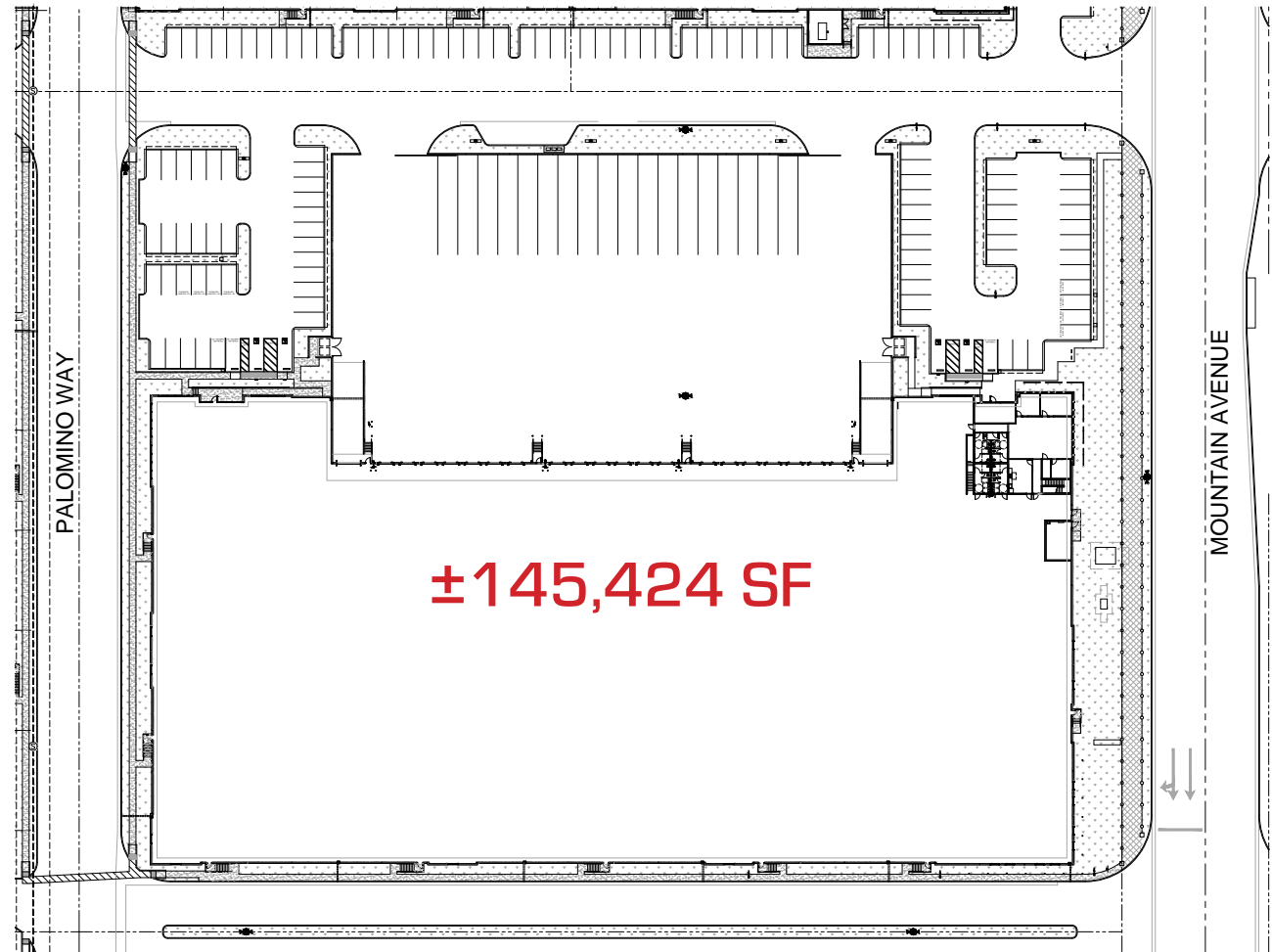


## BUILDING 14 | 1700 MOUNTAIN AVENUE, NORCO, CA

### BUILDING HIGHLIGHTS

- ±145,424 SF
- ±7,148 SF TOTAL SPEC OFFICE
- 36' CLEAR HEIGHT
- ESFR SPRINKLERS (K-25)
- ±185' TRUCK COURT DEPTH
- 20 DOCK DOORS
- 2 GROUND LEVEL DOORS
- 75 PARKING SPACES
- 18 TRAILER PARKING STALLS
- 4,000 AMP PANEL (VERIFY)
- SECURED CONCRETE TRUCK COURT
- 7" REINFORCED CONCRETE SLAB THICKNESS
- MECHANICAL PIT LEVELERS /LED WAREHOUSE LIGHTING

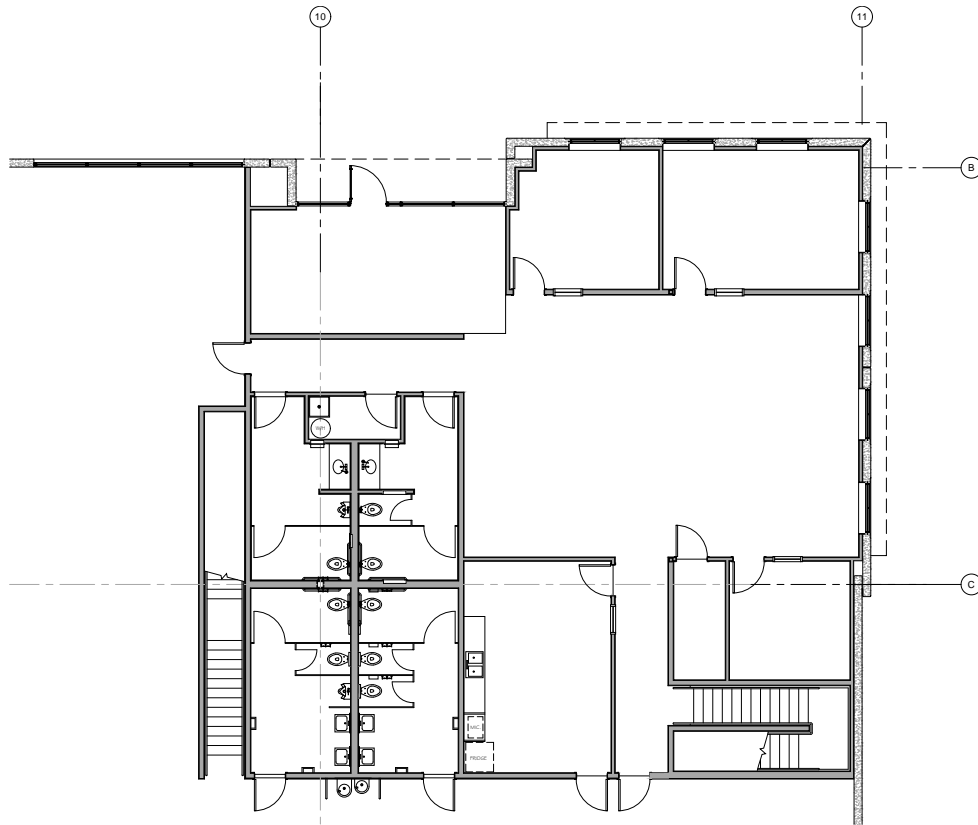
### SITE PLAN



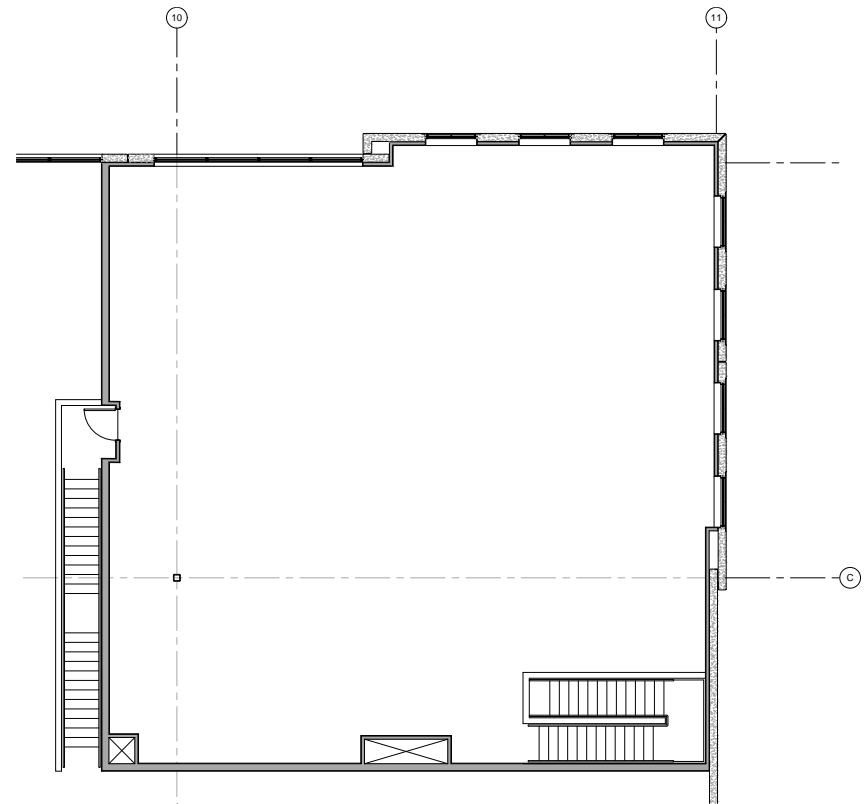


# BUILDING 14 | 1700 MOUNTAIN AVENUE, NORCO, CA

## 1ST FLOOR SPEC OFFICE



## 2ND FLOOR SPEC OFFICE











**PALOMINO RANCH**  
BUSINESS PARK  
HORSETOWN USA - NORCO, CA



**CAPROCK**  
PARTNERS



**PHASE II**

**PHASE III**





**CAPROCK**  
PARTNERS



**Jeff Ruscigno, SIOR**

Senior Vice President

951.276.3600

Lic#01030286

[jruscigno@leeriverside.com](mailto:jruscigno@leeriverside.com)

**Paul Earnhart, SIOR**

Senior Vice President

909.989.7771

Lic#01426559

[pearnhart@lee-assoc.com](mailto:pearnhart@lee-assoc.com)

**Ryan Earnhart**

Senior Vice President/Principal

909.373.2724

Lic#01426559

[rearnhart@lee-assoc.com](mailto:rearnhart@lee-assoc.com)

**Brian Pharris**

Senior Vice President/Principal

909.373.2927

Lic#01329363

[bpharris@lee-assoc.com](mailto:bpharris@lee-assoc.com)

**Austin Hill**

Senior Vice President/Principal

909.373.2732

Lic#01921364

[ahill@lee-assoc.com](mailto:ahill@lee-assoc.com)

**Jeff Smith, SIOR**

Senior Vice President/Principal

909.373.2909

Lic#01030286

[jsmith@lee-assoc.com](mailto:jsmith@lee-assoc.com)