



PALOMINO RANCH
BUSINESS PARK
HORSETOWN USA - NORCO, CA



CAPROCK
PARTNERS



BUILDING 17 | 1910 MOUNTAIN AVENUE, NORCO, CA

**Available
Now**
±68,266
Square Feet

LIVE



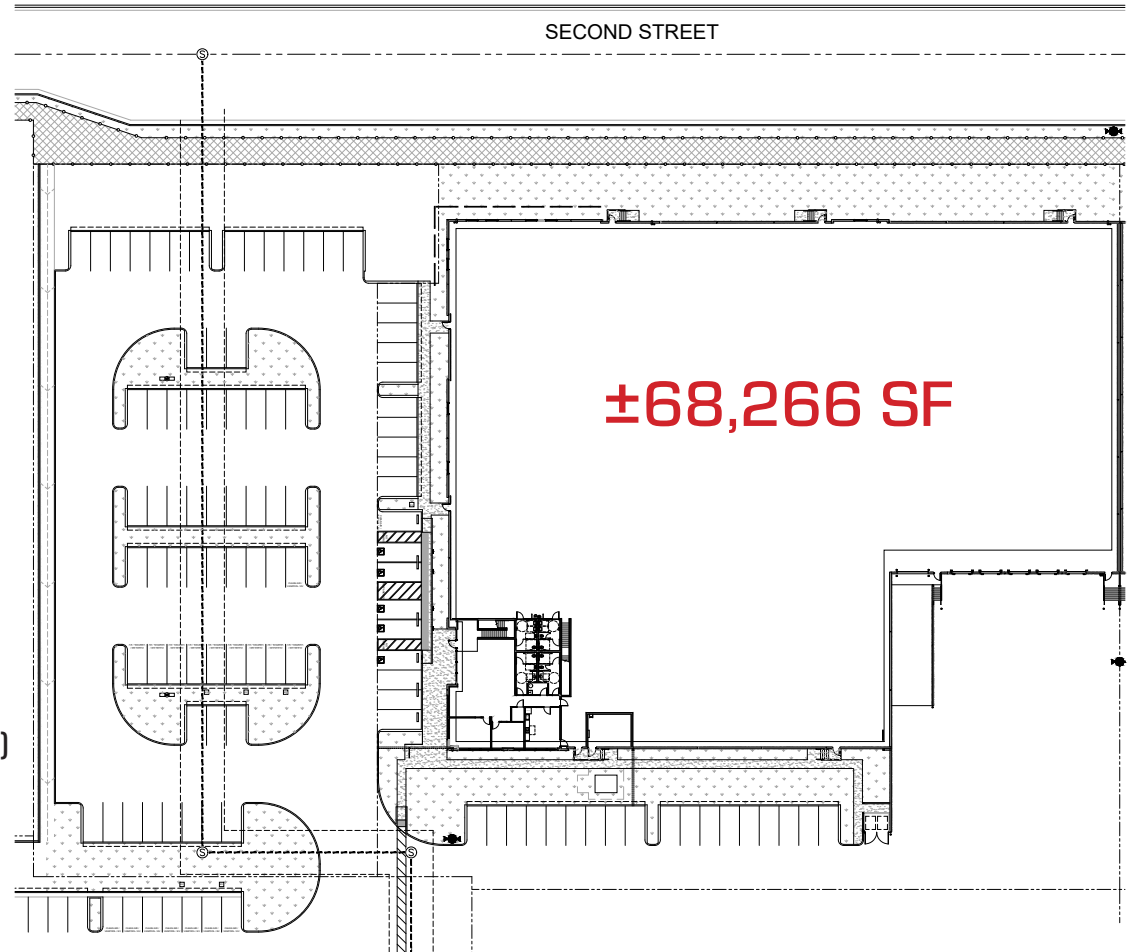


BUILDING 17 | 1910 MOUNTAIN AVENUE, NORCO, CA

BUILDING HIGHLIGHTS

- ±68,266 SF
- ±6,168 SF TOTAL SPEC OFFICE
- 30' CLEAR HEIGHT
- ESFR SPRINKLERS (K-25)
- ±163' TRUCK COURT DEPTH
- 5 DOCK DOORS
- 1 GROUND LEVEL DOOR
- 37 PARKING SPACES
- 1,600 AMP PANEL - EXPANDABLE TO 2,400 AMPS (VERIFY)
- SECURED CONCRETE TRUCK COURT
- 6" REINFORCED CONCRETE SLAB THICKNESS
- MECHANICAL PIT LEVELERS /LED WAREHOUSE LIGHTING

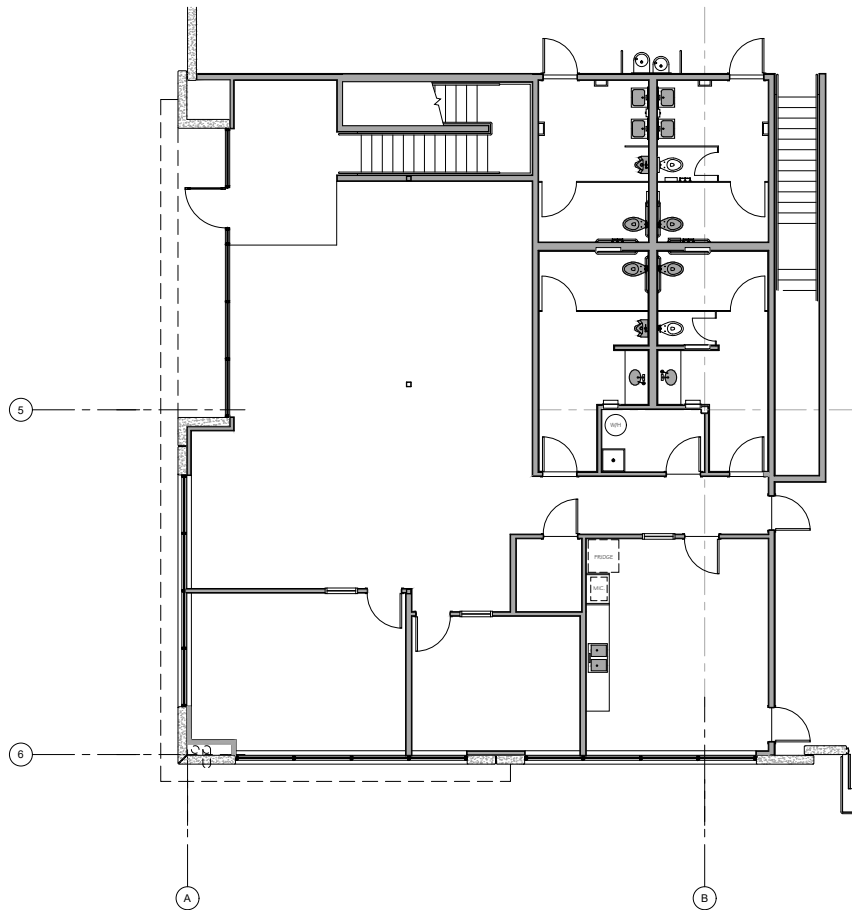
SITE PLAN



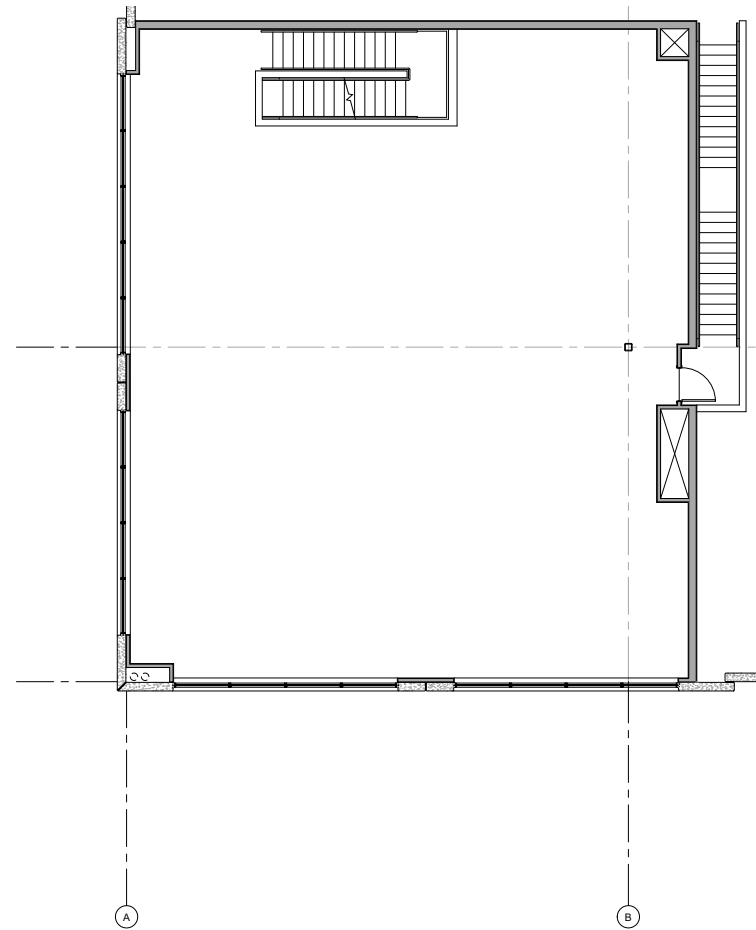


BUILDING 17 | 1910 MOUNTAIN AVENUE, NORCO, CA

1ST FLOOR SPEC OFFICE



2ND FLOOR SPEC OFFICE







PALOMINO RANCH
BUSINESS PARK
HORSETOWN USA - NORCO, CA



CAPROCK
PARTNERS



PHASE II

PHASE III



Jeff Ruscigno, SIOR
Senior Vice President
951.276.3600
Lic#01030286
jruscigno@leeriverside.com

Paul Earnhart, SIOR
Senior Vice President
909.989.7771
Lic#01426559
pearnhart@lee-assoc.com

Ryan Earnhart
Senior Vice President/Principal
909.373.2724
Lic#01426559
rearnhart@lee-assoc.com

Brian Pharris
Senior Vice President/Principal
909.373.2927
Lic#01329363
bpharris@lee-assoc.com

Austin Hill
Senior Vice President/Principal
909.373.2732
Lic#01921364
ahill@lee-assoc.com

Jeff Smith, SIOR
Senior Vice President/Principal
909.373.2909
Lic#01030286
jsmith@lee-assoc.com