



PALOMINO RANCH
BUSINESS PARK
HORSETOWN USA - NORCO, CA



CAPROCK
PARTNERS



BUILDING 8 | 1860 MOUNTAIN AVENUE, NORCO, CA

**Available
Now**
+72,245
Square Feet

LIVE



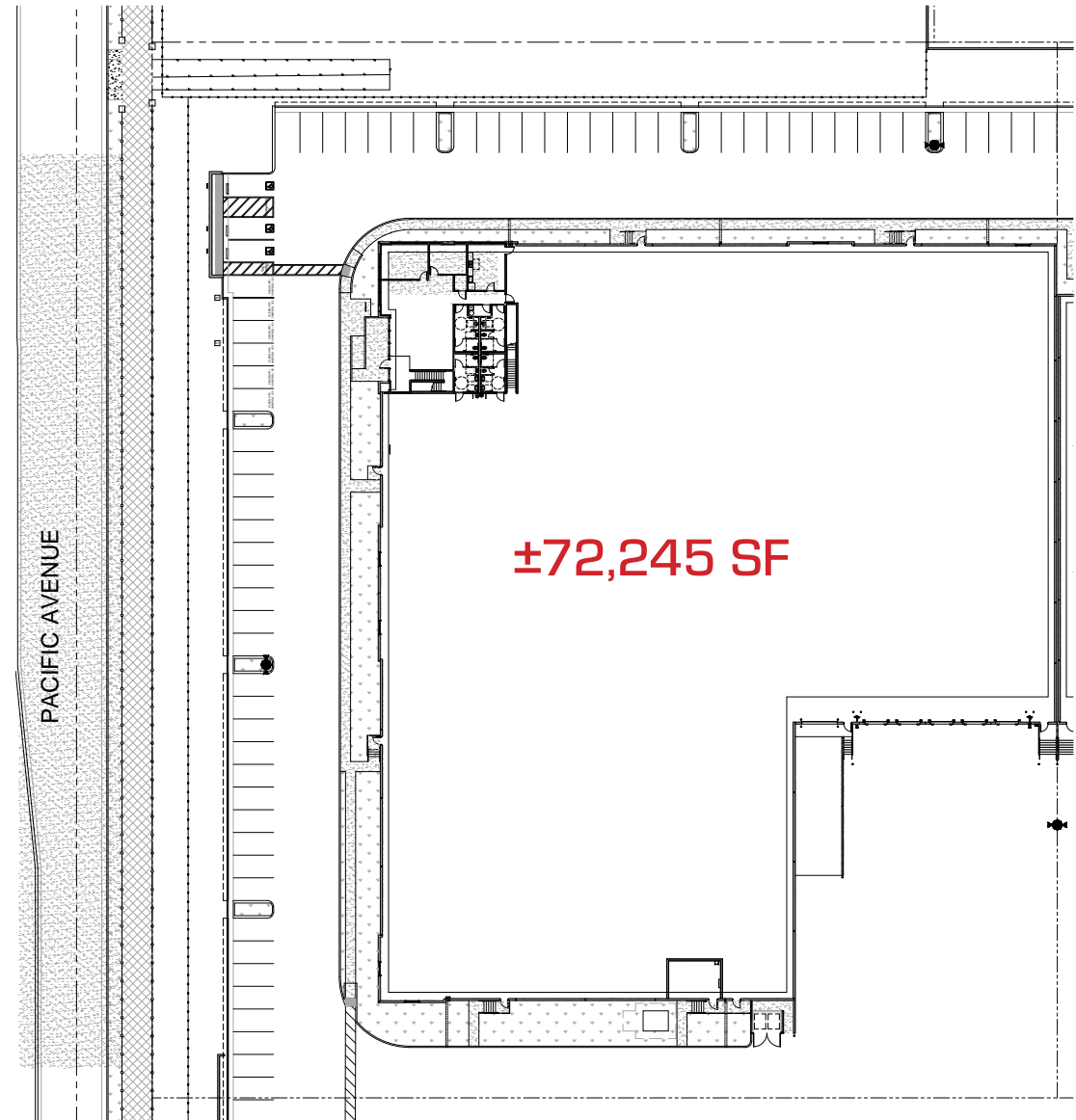


BUILDING 8 | 1860 MOUNTAIN AVENUE, NORCO, CA

BUILDING HIGHLIGHTS

- $\pm 72,245$ SF
- $\pm 6,039$ SF TOTAL SPEC OFFICE
- 32' CLEAR HEIGHT
- ESFR SPRINKLERS (K-25)
- $\pm 165'$ TRUCK COURT DEPTH
- 5 DOCK DOORS
- 1 GROUND LEVEL DOOR
- 69 PARKING SPACES
- 1,600 AMP PANEL - EXPANDABLE TO 2,400 AMPS (VERIFY)
- SECURED CONCRETE TRUCK COURT
- 6" REINFORCED CONCRETE SLAB THICKNESS
- MECHANICAL PIT LEVELERS /LED WAREHOUSE LIGHTING

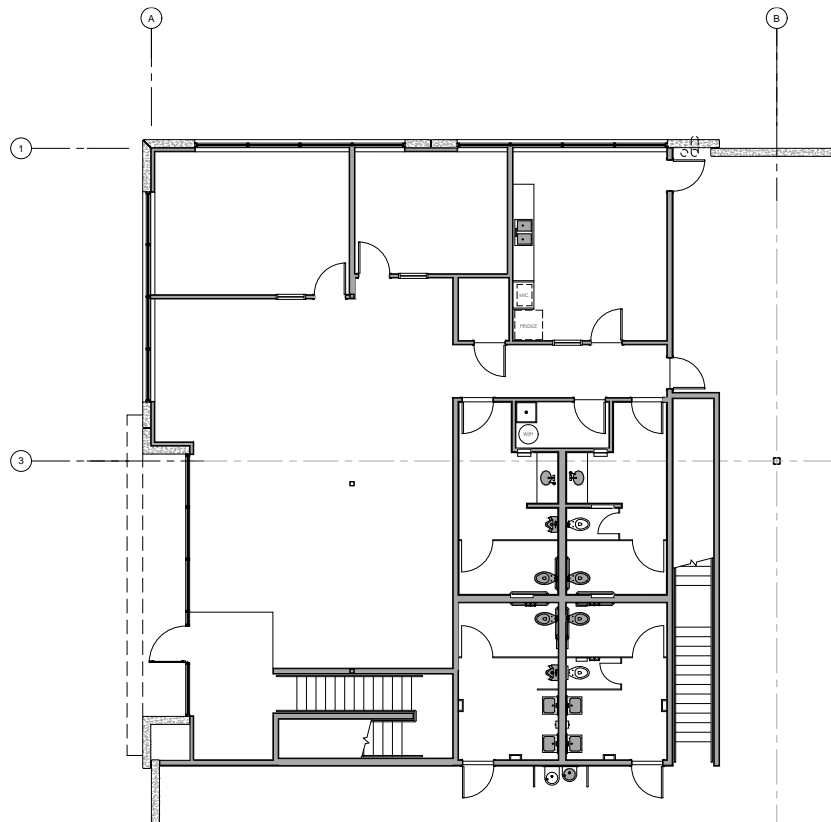
SITE PLAN



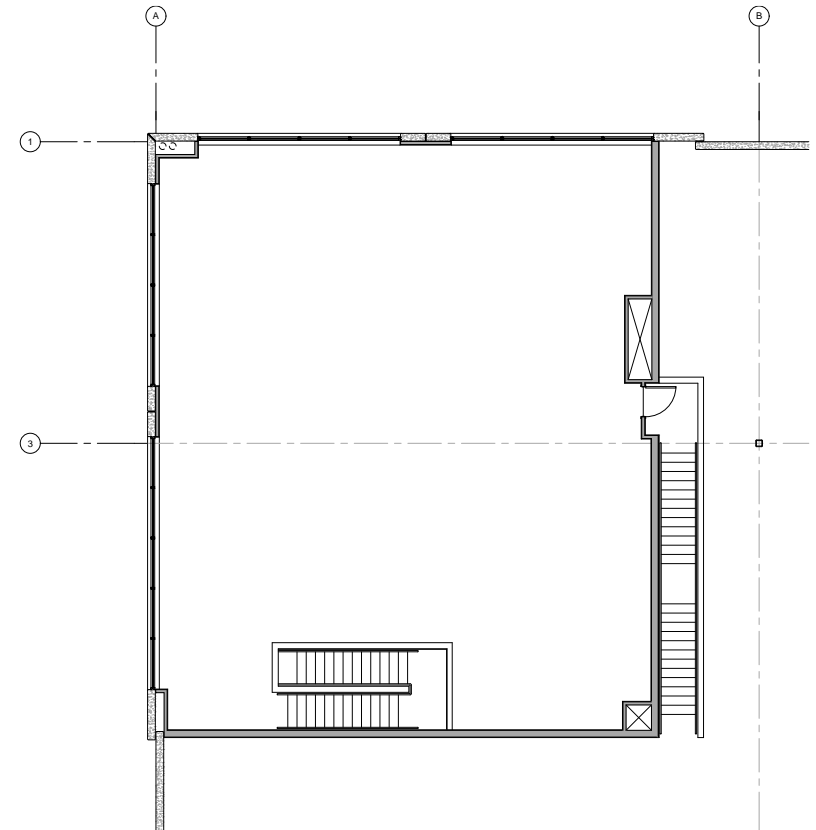


BUILDING 8 | 1860 MOUNTAIN AVENUE, NORCO, CA

1ST FLOOR SPEC OFFICE



2ND FLOOR SPEC OFFICE







PALOMINO RANCH
BUSINESS PARK
HORSETOWN USA - NORCO, CA



CAPROCK
PARTNERS





CAPROCK
PARTNERS



Jeff Ruscigno, SIOR

Senior Vice President

951.276.3600

Lic#01030286

jruscigno@leeriverside.com

Paul Earnhart, SIOR

Senior Vice President

909.989.7771

Lic#01426559

pearnhart@lee-assoc.com

Ryan Earnhart

Senior Vice President/Principal

909.373.2724

Lic#01426559

rearnhart@lee-assoc.com

Brian Pharris

Senior Vice President/Principal

909.373.2927

Lic#01329363

bpharris@lee-assoc.com

Austin Hill

Senior Vice President/Principal

909.373.2732

Lic#01921364

ahill@lee-assoc.com

Jeff Smith, SIOR

Senior Vice President/Principal

909.373.2909

Lic#01030286

jsmith@lee-assoc.com