

BUILDING 9 | 1840 MOUNTAIN AVENUE, NORCO, CA

Available
Now
+67,400
Square Feet

LIVE

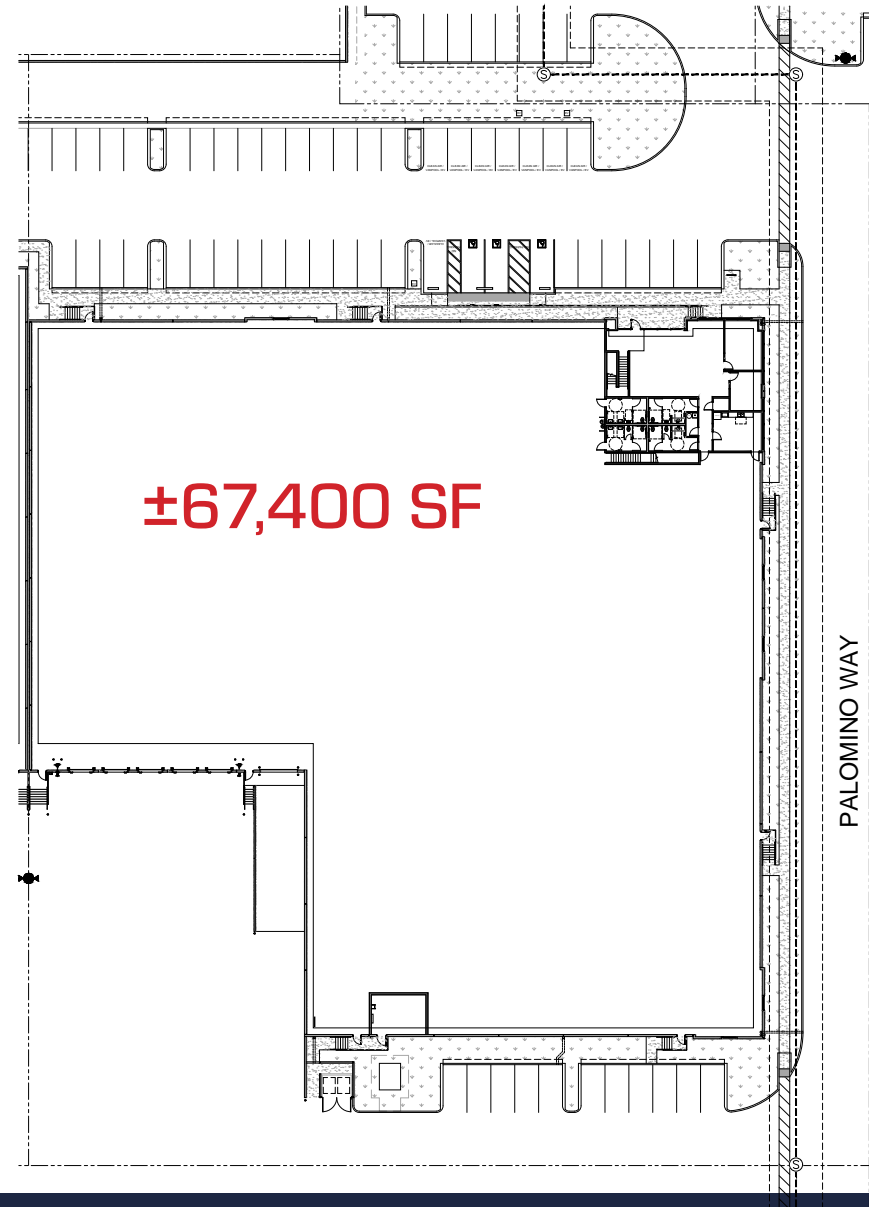


BUILDING 9 | 1840 MOUNTAIN AVENUE, NORCO, CA

BUILDING HIGHLIGHTS

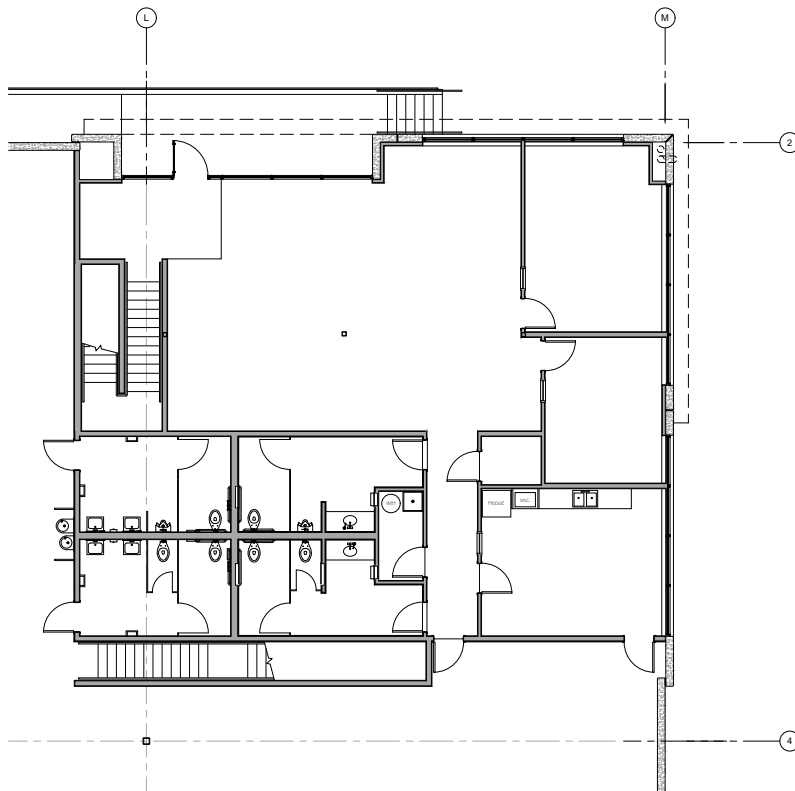
- ±67,400 SF
- ±6,039 SF TOTAL SPEC OFFICE
- 32' CLEAR HEIGHT
- ESFR SPRINKLER (K-25)
- ±165' TRUCK COURT DEPTH
- 5 DOCK DOORS
- 1 GROUND LEVEL DOOR
- 58 PARKING SPACES
- 1,600 AMP PANEL - EXPANDABLE TO 2,400 AMPS (VERIFY)
- SECURED CONCRETE TRUCK COURT
- 6" REINFORCED CONCRETE SLAB THICKNESS
- MECHANICAL PIT LEVELERS /LED WAREHOUSE LIGHTING

SITE PLAN

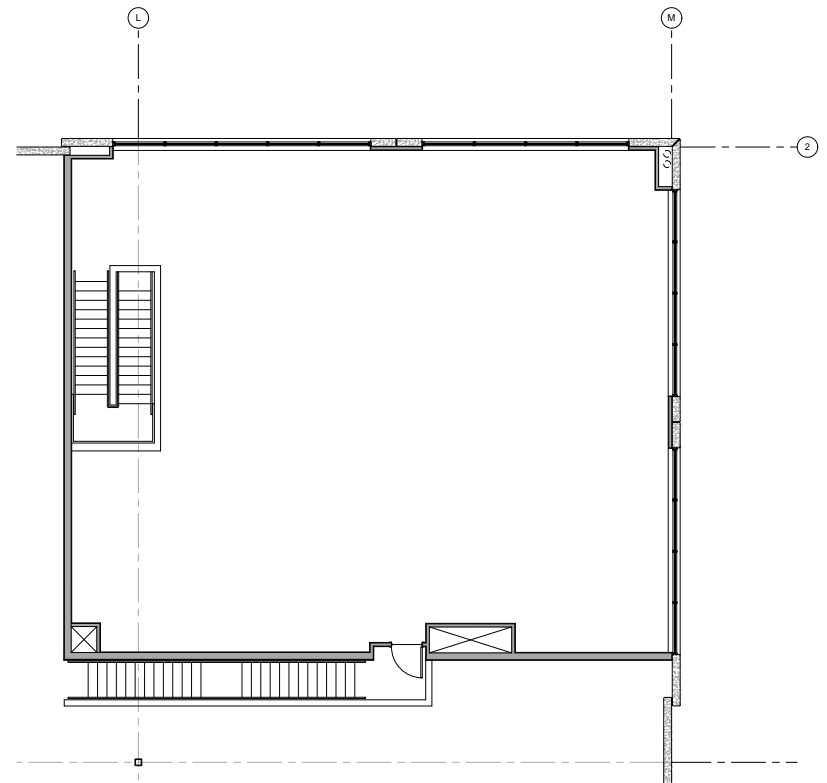


BUILDING 9 | 1840 MOUNTAIN AVENUE, NORCO, CA

1ST FLOOR SPEC OFFICE



2ND FLOOR SPEC OFFICE







PALOMINO RANCH
BUSINESS PARK
HORSETOWN USA - NORCO, CA



CAPROCK
PARTNERS



PHASE II

PHASE III



CAPROCK
PARTNERS



Jeff Ruscigno, SIOR

Senior Vice President

951.276.3600

Lic#01030286

jruscigno@leeriverside.com

Paul Earnhart, SIOR

Senior Vice President

909.989.7771

Lic#01426559

pearnhart@lee-assoc.com

Ryan Earnhart

Senior Vice President/Principal

909.373.2724

Lic#01426559

rearnhart@lee-assoc.com

Brian Pharris

Senior Vice President/Principal

909.373.2927

Lic#01329363

bpharris@lee-assoc.com

Austin Hill

Senior Vice President/Principal

909.373.2732

Lic#01921364

ahill@lee-assoc.com

Jeff Smith, SIOR

Senior Vice President/Principal

909.373.2909

Lic#01030286

jsmith@lee-assoc.com