

BUILDING 15 | 1810 MOUNTAIN AVENUE, NORCO, CA

Available
Now
+64,631
Square Feet

 LIVE

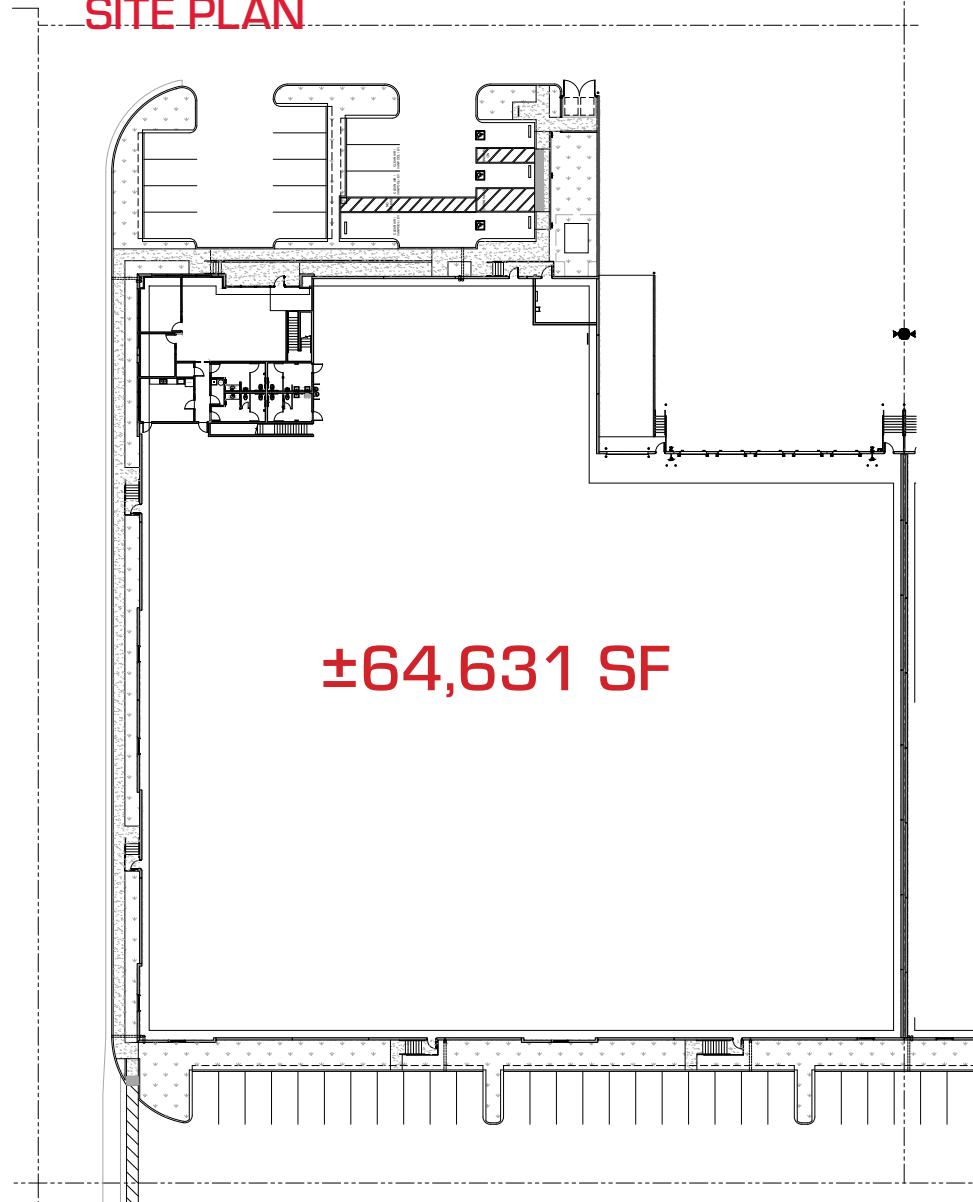


BUILDING 15 | 1810 MOUNTAIN AVENUE, NORCO, CA

BUILDING HIGHLIGHTS

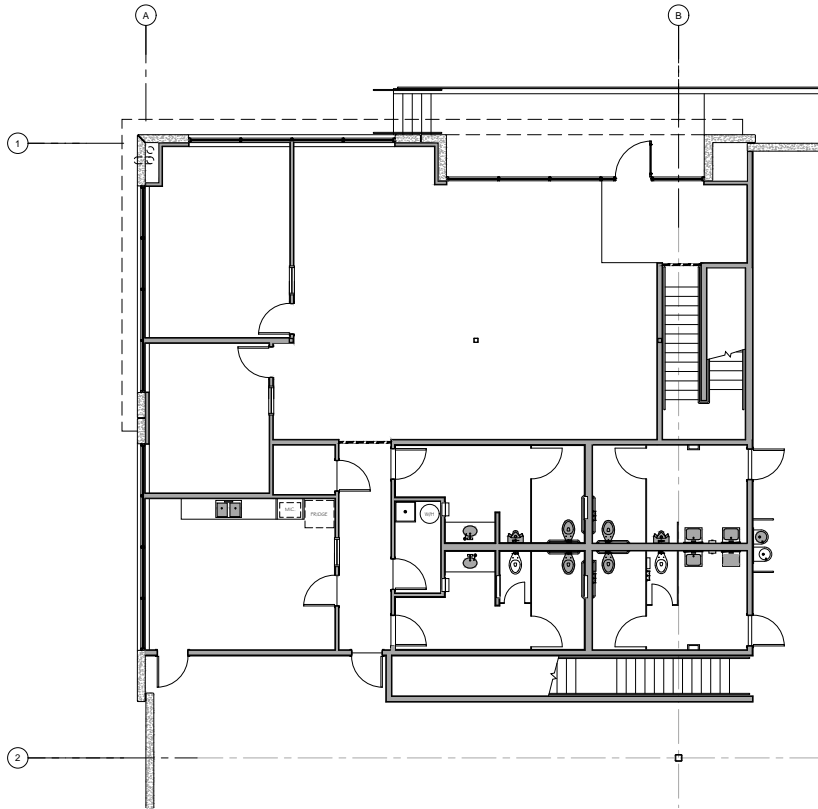
- ±64,631 SF
- ±6,039 SF TOTAL SPEC OFFICE
- 32' CLEAR HEIGHT
- ESFR SPRINKLERS (K-17 @ 52PSI)
- ±165' TRUCK COURT DEPTH
- 5 DOCK DOORS
- 1 GROUND LEVEL DOOR
- 41 PARKING SPACES
- 1,600 AMP PANEL - EXPANDABLE TO 2,400 AMPS (VERIFY)
- SECURED CONCRETE TRUCK COURT
- 6" REINFORCED CONCRETE SLAB THICKNESS
- MECHANICAL PIT LEVELERS /LED WAREHOUSE LIGHTING

SITE PLAN

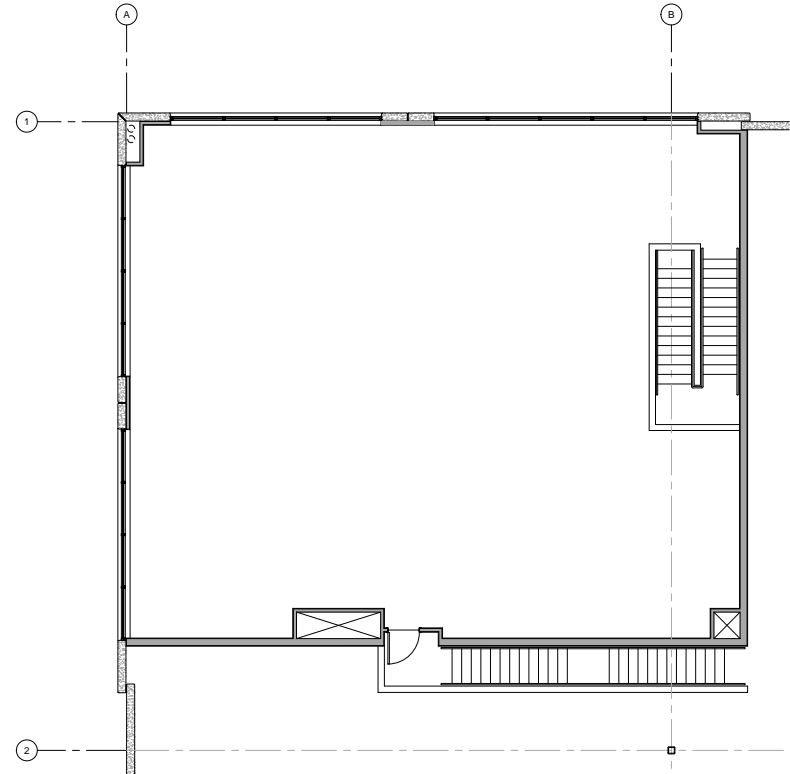


BUILDING 15 | 1810 MOUNTAIN AVENUE, NORCO, CA

1ST FLOOR SPEC OFFICE



2ND FLOOR SPEC OFFICE







PALOMINO RANCH
BUSINESS PARK
HORSETOWN USA - NORCO, CA



CAPROCK
PARTNERS



PHASE II

PHASE III

Bldg 7

Bldg 8

Bldg 9

Bldg 15

Bldg 17

Bldg 18

Bldg 16

Bldg 14

Mountain Ave

Second St



Jeff Ruscigno, SIOR
 Senior Vice President
 951.276.3600
 Lic#01030286
jruscigno@leeriverside.com

Paul Earnhart, SIOR
 Senior Vice President
 909.989.7771
 Lic#01426559
pearnhart@lee-assoc.com

Ryan Earnhart
 Senior Vice President/Principal
 909.373.2724
 Lic#01426559
rearnhart@lee-assoc.com

Brian Pharris
 Senior Vice President/Principal
 909.373.2927
 Lic#01329363
bpharris@lee-assoc.com

Austin Hill
 Senior Vice President/Principal
 909.373.2732
 Lic#01921364
ahill@lee-assoc.com

Jeff Smith, SIOR
 Senior Vice President/Principal
 909.373.2909
 Lic#01030286
jsmith@lee-assoc.com